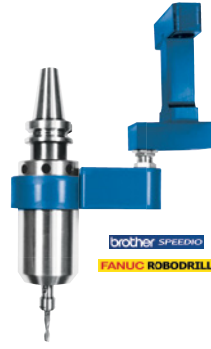


**625XDT**

30,000 - 65,000 rpm • 0.90 hp (0.67 kW)  
ER 11 - 1/4" / 6mm

Retrofit Fanuc Robodrill, Brother TC and other Drill Tap machines. Just integrate the new, patented, double turbine 625XDT Series spindles to your Drill Tap machine magazine for automatic tool changing and dramatically increase production. Faster milling and drilling feed rates with no duty cycle for true 24/7 unattended production optimize end mill performance with small tools at constant high speed.


**625**

30,000 - 65,000 rpm • 0.50 hp (0.37 kW)  
ER 11 - 1/4" / 6mm

Retrofit any CNC for constant high speed performance - only 2 moving parts means low heat, negligible heat expansion with no duty cycle. Mold making, deburring, super finishing, marking and more. Increase your inches per minute. Increase reliability + cut repair costs with direct drive governed Air Turbine Spindles®. Automatic Toolchanger (TMA) manifold & block option or just connect rear spindle inlet to your air blast. Just connect dry clean 90 psi / 6.2 bar air. Join 1,000's of Haas, DMG, Mazak and CNC users getting higher productivity.


**650**

25,000 - 50,000 rpm • 0.80 hp (0.66 kW)  
ER 11 - 1/4" / 6mm

Awesome Power. Patented governed high speed + torque under load for continuous tool path engagement. This powerful workhorse accelerates cutting action and does not burn up like geared speeders or HF electric spindles. Milling, routing, drilling, slotting - 24/7 with no duty cycle. The 650 Series with double front ceramic bearings is reliable in long duration production cycles. Double turbine X version available at 1.4 hp / 1 kW.


**Work safer with the low vibration of Air Turbine Tools®**

- Reduce stress and injury risk
- Effectively eliminates working time limits
- Light & powerful
- < 65 dBA



| Hand Arm Vibration Exposure Statistics |   |   |
|--|---|---|
| Model                                  | Time to reach EAV 2.5 m/s <sup>2</sup> A(8) | Time to reach ELV 5 m/s <sup>2</sup> A(8) |
| 200SV                                  | 17 hrs, 58 min                              | 71 hrs, 50 min                            |
| 0145SV                                 | 4 hrs, 44 min                               | 18 hrs, 55 min                            |
| 201SV                                  | 128 hrs, 15 min                             | 513 hrs                                   |
| 206XSV                                 | 24 hrs, 28 min                              | 97 hrs, 51 min                            |
| 525SV                                  | 23 hrs, 32 min                              | 94 hrs, 6 min                             |
| 310RSV                                 | 345 hrs, 40 min                             | 1382 hrs, 37 min                          |

**200SV**

50,000 rpm • 0.30 hp (0.22 kW)  
1/8" / 3mm • 5.4 oz (0.15 kg)

The 200SV is a completely oil free precision tool with no vanes to repair or lubricate. No maintenance is required - just supply clean, dry 90 psi / 6.2 bar air. Air Turbine Tools® give you lower operating costs, including less repairs, up to 30% savings on compressed air usage and longer cutting tool life.


**0145SSV - Precision Angle Tool**

40,000 - 65,000 rpm • 0.20 hp (0.15 kW)  
1/8" / 3mm • 6 oz (0.17 kg)

Put the 0145SSV in your fingers or palm and experience exceptionally fine control necessary for close proximity work. Our patented 45° design conforms to the natural position of your hand for hand-eye coordination. Try this light comfortable tool - its a complete contrast to traditional pencil tools.


**201SV - Pencil Tool**

40,000 - 90,000 rpm • 0.20 hp (0.15 kW)  
1/8" / 3mm • 6 oz (0.17 kg)

Designed to work reliably in industrial applications our light 201SV is powerful. You will immediately feel the 201SV's ultra low vibration and weight and hear the < 65 dBA sound level. Only a light hand guiding the 201SV is needed to get our signature benefits.

**206XSV**

30,000 - 50,000 rpm • 0.40 hp (0.30 kW)  
1/4" / 6mm • 8.2 oz (0.23 kg)

The 206XSV is light and quiet with ultra low vibration magnitude at 1.43 m/s<sup>2</sup> r.m.s. Now you can replace your heavy noisy vibrating tools requiring lubrication and maintenance. Work with governed high speed which stays near rated speed under load at constant 50,000 rpm. You will get superb surface quality and virtually no stress.

**525SV**

30,000, 40,000 rpm • 0.45 hp (0.34 kW)  
1/4" / 6mm • 14.5 oz (0.41 kg)

Finishing or trimming metal? Deburring aluminum or steel? The light, powerful and comfortable 525SV features a slim barrel providing easy access for hard-to-reach areas. "Let the speed do the cutting," as you guide the tool and reduce fatigue and stress.

**310RSV - Router Tool**

25,000 - 40,000 rpm • 0.88 hp (0.66 kW)  
1/4" / 6mm • 37.3 oz (1.0 kg)

Control and Power - to 0.88 hp. For high speed routing. Wood, plastics and fiberglass are cut faster and cleaner at governed 40,000 rpm with less fiber break-out with the 310RSV. Oil-free mechanism results in no oil misting and no part contamination. The 310RSV is a light powerful direct drive turbine with only 2 moving parts - resulting in great reliability. A further advantage of the 310RSV is the tool's low vibration magnitude (just 0.38 mm/s<sup>2</sup>) and low heat - both improving operator comfort and reducing RSI risk.


**202HD**

30,000 - 65,000 rpm • 0.55 hp (0.41 kW)  
ER 8 - 1/8" / 3mm • 11 oz (0.31 kg)

Accelerate production. The popular 19 mm O.D. steel barrel 202HD is an oil-free fixture mount motor with governed constant speeds of 30,000, 40,000, 50,000 and 65,000 rpm. The 202HD has a stainless steel barrel designed for rigidity in clamping applications, including drilling rubber and plastics. The 202HD operates reliably 24/7 maintaining high speed rotation under cutting load.

**450HD**

25,000 - 40,000 rpm • 0.88 hp (0.66 kW)  
ER 11 - 1/4" / 6mm • 40 oz (1.13 kg)

Powerful and rugged: 450HD is a proven success routing, milling, deburring, drilling & more. The steel barrel for rigid mounting combines with double front and double rear ceramic bearings cooled by turbine air for great durability. Sealed front end for wet environments. Cut faster and cleaner with the 450HD. Double turbine option available for up to 1.4 hp / 1 kW.

**722MX**

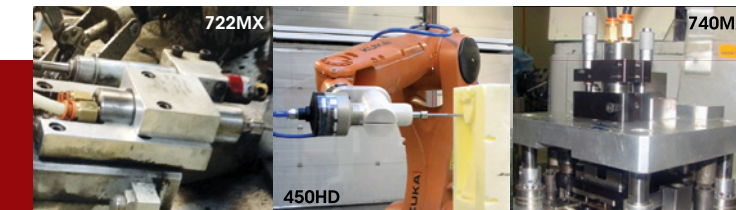
40,000 - 65,000 rpm • 0.20 hp / 0.15 kW  
ER 8 - 1/8" / 3mm • 16 oz (0.45 kg)

The patented double turbine 722MX drops in to give you 65,000 rpm. The 722MX accelerates your production and is ideal for micro tools. Low vibration motor with just 2 moving parts, no gears, vanes, or brushes to burn up. Durable ceramic bearings. Ideal for lathes, swiss automatics, robotics and finishing. Mountable area of 22mm by 90mm. Also available with 19, 20, 30 and 32 mm outside diameters.

**740MX**

30,000 - 50,000 rpm • 0.95 hp (0.75 kW)  
ER 11 - 1/4" / 6mm • 64 oz (1.81 kg)

The patented high torque 740MX from Air Turbine Motors® accelerates your production and cuts your repair costs and downtime. Ideal for lathes, swiss automatics, robotics and finishing in 24/7 operations. No control system, lubrication or maintenance needed.





## Why are Air Turbine Tools® different?

- Governed 25,000 to 90,000 rpm, to 1.4 hp / 1.04 kW.
- Dramatically improve your cycle times and productivity.
- High peripheral speed for improved cutting action and longer cutting tool life.
- Higher surface quality and optimized end mill performance.
- No maintenance or lubrication. No control system.
- Reliable 24/7 operation. No duty cycle.
- Inlet air pressure 90 psi / 6.2 bar dry air only.
- Up to 30% savings on compressed air consumption.
- Totally oil-free system; grease-packed bearings.



1225 Broken Sound Pkwy, NW,  
Boca Raton, FL 33487 USA

Phone: 1.561.994.0500  
Fax: 1.561.994.8097

All rights reserved. © 2016 Air Turbine Tools, Inc.  
All specifications approximate.  
www.airturbinetools.com

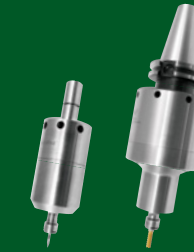


A Selection from 70+ Units

### High Speed Spindle Series

25,000 - 90,000 rpm • 1.4 hp / 1.04 kW

High speed is maintained under load with continuous tool path engagement close to rated speed. Autochange on any CNC for full integration of high speed in programs. No duty cycle, no heat, great reliability



### Hand Tool Series

the tools of a new generation™

Reduce Injury risk and increase productivity with this powerful light weight range with ultra low vibration. Stress-free polishing, finishing, part cleaning, engraving, routing, tool & die, weld and flash removal.



### Motor Mount Series

25,000 - 65,000 rpm • 1.4 hp / 1.04 kW

Automated finishing, milling, drilling and lathe applications. High peripheral speed for improved cutting action, cleaner finished surfaces and longer cutting tool life in automation and robotics. Great reliability with just 2 moving parts.



www.airturbinetools.com  
1.561.994.0500 • Info@airturbinetools.com